

WELCOME TO FOCAL EPILEPSY CONFERENCE FAROE ISLANDS

24.–26. MAY 2017



For more info: www.mice.fo/focalepilepsyfaroeislands2017

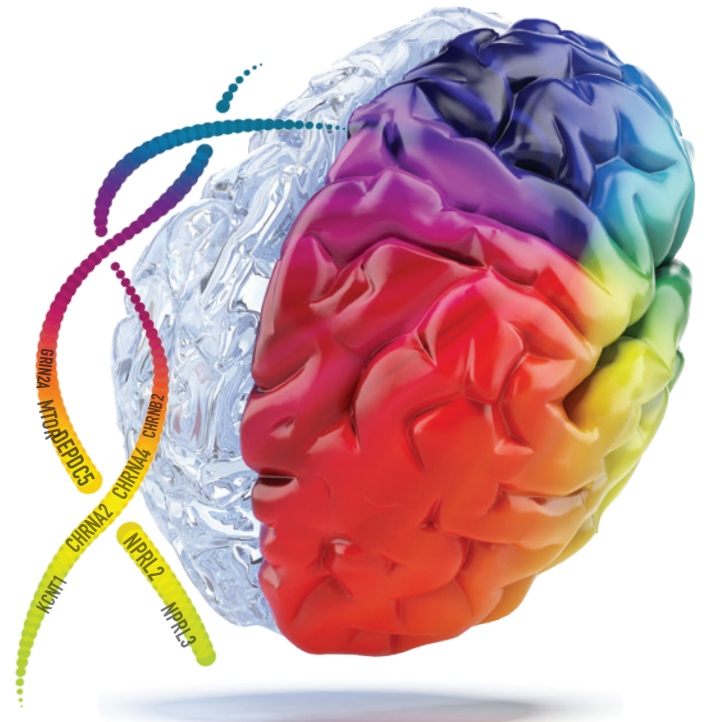
CONFERENCE IN THE FAROE ISLANDS 24.–26. MAY 2017

Come and join us in a focused scientific conference in spectacular uninterrupted surroundings and inspiring environment.

We have arranged this event with special attention on focal epilepsy in collaboration with the Danish Epilepsy Center, Filadelfia and Amplexa Genetics A/S. Join us and a range of world-leading experts who will share their knowledge – please see Scientific Program and the Speakers list.

The conference will take place in Tórshavn, the Capital of Faroe Islands. Situated in the North-east Atlantic, the Faroe Islands are an archipelago of 18 mountainous islands, with a population of 50.000 people and well maintained infrastructure and high conference facilities. The conference aims for a high scientific standard in a relaxed and informal environment. The scientific part will be spiced with extraordinary nature and culture, blended with modern and genuine Nordic cuisine. Mark your calendar 24-26. May 2017 and follow the Viking trail for a cultural and scientific experience.

On behalf the scientific committee we wish to welcome clinicians and scientists to the Focal Epilepsy Conference, Faroe Islands.



PROGRAM

The aim of the conference is to bring together researchers and clinicians working with focal epilepsies to present the latest knowledge in the genetic aetiology of focal epilepsy along with phenotypic and diagnostic aspects of the disorder. The target audience for the meeting is clinicians, epileptologists, neurologists and paediatrics interested in focal epilepsies.

The program will cover clinical aspects, geno-phenotype correlation, genetic aetiology and treatment options in relation to the known molecular mechanisms.

Two general overview lectures will be given. The aim of these is to give a basic overview of genetic and clinical aspects of focal epilepsies by prof. Ingo Helbig and an overview on clinical phenotype and genetics of brain-malformation in focal epilepsies by prof. Renzo Guerrini.

Surgery as treatment option will be covered and lessons from functional studies and models organisms will be presented. Novel results from one of the latest large scale research studies will be presented and finally the prospects of precision medicine in focal epilepsy will be highlighted.



Johannes Lemke
Prof. University of Leipzig



Guido Rubboli
Prof. University of Copenhagen and Danish Epilepsy Centre



Helle Hjalgrim
Assoc. Prof. University of Southern Denmark and Danish Epilepsy Centre



Rikke Møller
Assoc. Prof. University of Southern Denmark and Danish Epilepsy Centre



Leanne Dibbens
Assoc. Prof. University of South Australia, Adelaide



Hans Atli Dahl
Ph.D. CEO Amplexa Genetics A/S



Stéphanie Baulac
Assoc. Prof. Institut du Cerveau et de la Moelle-ICM, Paris



www.mice.fo/focalepilepsyfaroeislands2017/fec2017.html

24TH MAY

25TH MAY

26TH MAY

TIME	TOPIC	SPEAKER	TITLE
08:00	Welcome and introduction to the conference	Helle Hjalgrim	
08:15	Overview lecture	Ingo Helbig	From channels to structure
09:00	Diagnosis of focal epilepsies – challenges and advances	Johannes Lemke	The lesson from gene panels and exome sequencing – 6 years of NGS
09:25		Pasquale Striano	Electroclinical features of (genetic) Focal Epilepsies
09:50		Pouya Khankhanian	Electronic phenotyping and EMR data extraction
10:15		Coffee	
10:45	Genotype-phenotype correlation, functional consequences and innovative treatment	Francesca Bisulli	Sleep related hypermotor epilepsy: A unique syndrome with heterogeneous genetic aetiologies
11:15		Fabienne Picard	Genetic aspects of Nicotinic receptor mutations in Focal Epilepsies
11:45		Sarah Weckhuysen	Focal epilepsy related to the KCNQ2 and KCNQ3 genes
12:15		Lunch	
13:15	Genotype-phenotype correlation, functional consequences and innovative treatment	Carlo Nobile	Genetics of LGI1- and reelin-related Focal Epilepsies
13:45		Roberto Michelucci	Clinical features of autosomal dominant lateral temporal lobe epilepsy linked to LGI1 and Reelin mutations
14:15		Rikke Møller	Focal Epilepsies related to the KCNT1 gene
14:45		Coffee/posterviewing	
15:15	Genotype-phenotype correlation, functional consequences and innovative treatment	Johannes Lemke	Focal Epilepsies related to GRIN genes: Phenotypes and functional studies
15:45		Fabienne Picard	Clinical aspects of Focal Epilepsies related to the GATOR pathway
16:15		Leanne Dibbens	The genetics of Focal Epilepsies related to the mTOR/GATOR1 pathways

TOPIC	SPEAKER	TITLE
Overview lecture	Renzo Guerrini	Clinical phenotype in Malformation of Cortical Development
		Genetics and Brain Malformation
Presentations selected from posters	Stéphanie Baulac	Somatic mutations in FCD
	Coffee	
Functional Studies/ Model organisms	Theo Ribierre	Functional studies in mTOR-related Focal Epilepsies
	Alfonso Represa	Neuropathological Basis of Epilepsy in Cortical Development Disorders
	Rüdiger Köling	Tumor-induced epilepsies – Models and Concepts
	Lunch	
	Presentations selected from posters	
	Coffee/posterviewing	
	Working group session	

TOPIC	SPEAKER	TITLE
Surgery	Guido Rubboli	Overview of epilepsy surgery in focal epilepsies
	Bobby Koелеman	The importance of genetics for epilepsy surgery evaluation and prognosis
	Coffee/posterviewing	
Bio-informatics	Colin Ellis	Data integration in focal epilepsies: concepts and challenges
New discoveries: Epi25 data	Peter de Jonghe	Results from the EPI25 project
Precision medicine	Steffen Syrbe	Precision medicine in genetic epilepsies
	Lunch	

ThermoFisher
SCIENTIFIC



PerkinElmer
For the Better